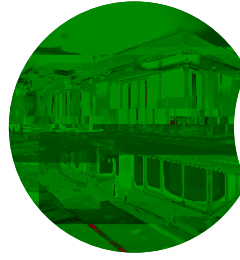


:
: 24/30/36KW



WHIST



443



ASC



" "



, NOx , 108%, 7



20

	KW	24.4	30.4	36.4
	KW	3.0	3.8	4.6
	KW	3.0	3.8	4.6
	KW	25.5	32.0	38.6
	KW	10.0	12.0	15.0
(80 /60)	%	98	98	98
(50 /30)	%	108	108	108
	MPa	0.3	0.3	0.3
	kg/min	3	3	3
(t=25K)	kg/min	13.4	16.7	20.0
	W	125	140	140
	Mpa	0.1	0.1	0.1
(12T)	m³/h	0.32-2.58	0.4-3.22	0.49-3.85
	m²	81-185	101-231	121-277
(* *)	mm	710*400*317	710*400*317	710*400*317
Nox		7	7	7
	inch	G3/4	G3/4	G3/4
	inch	G3/4	G3/4	G3/4
	inch	G1/2	G1/2	G1/
	mm	60*100	60*100	60*100
	—			有